

UNILOY®



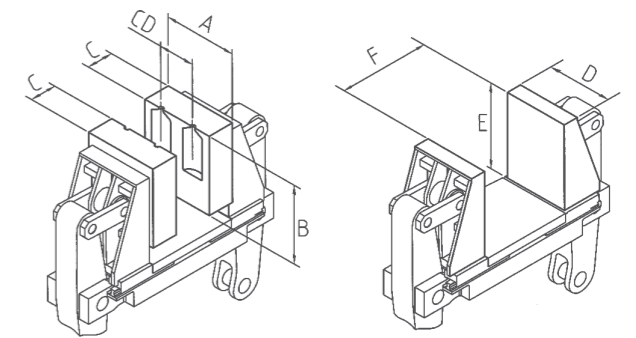
UCS SHUTTLE SERIES

***ALL-ELECTRIC CONTINUOUS EXTRUSION
BLOW MOLDING MACHINES***

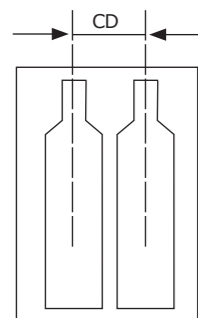
UCS ALL-ELECTRIC SHUTTLE SERIES

CONTINUOUS EXTRUSION BLOW MOLDING MACHINES

MOLD AND PLATENS			UCS 10.E	UCS 12.E	UCS 14.E	UCS 16.E	UCS 20.E	UCS 23.E	UCS 27.E	UCS 30.E	UCS 40.E	UCS 27 J.E	UCS 35 J.E
Max mold width	(A)	mm	390	440	515	640	700	740	800	800	1100	700	690
Max mold height*	(B)	mm	420	420	450	490	490	490	490	490	490	650	730
Half mold thickness	(C)	mm	140	140	140	165	180	180	180	180	180	200	250
Platen dimensions	(DxE)	mm	320 x 400	360 x 400	400 x 400	640 x 440	520 x 440	700 x 440	750 x 440	750 x 440	980 x 440	500 x 600	680 x 700
Max daylight between platens	(F)	mm	540	540	540	580	715	715	715	715	715	800	1000



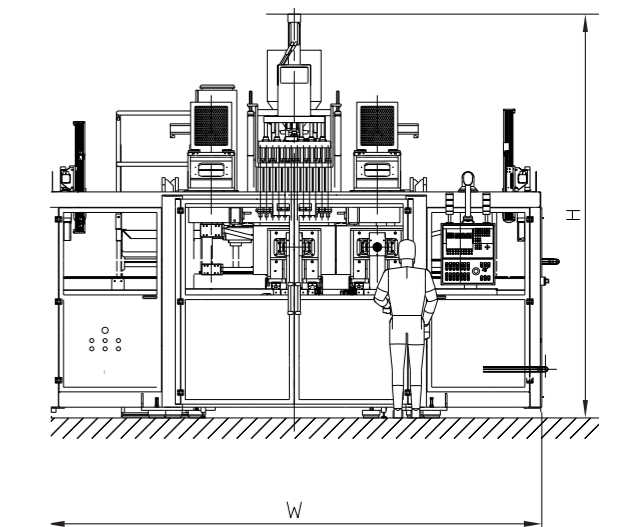
CENTER DISTANCES



2 cavity	mm	180	190	230	270	300	340	350	350	-	350	320
3 cavity	mm	110	125	150	200	220	230	240	240	-	240	-
4 cavity	mm	85	100	110	150	165	170	180	180	220	-	-
5 cavity	mm	65	75	85	120	130	135	150	150	200	-	-
6 cavity	mm	55	65	75	100	110	115	120	120	170	-	-
7 cavity	mm	-	-	60	80	90	95	105	105	145	-	-
8 cavity	mm	-	-	55	75	80	85	90	90	125	-	-
10 cavity	mm	-	-	-	50	65	65	75	75	100	-	-
12 cavity	mm	-	-	-	-	50	55	60	60	85	-	-

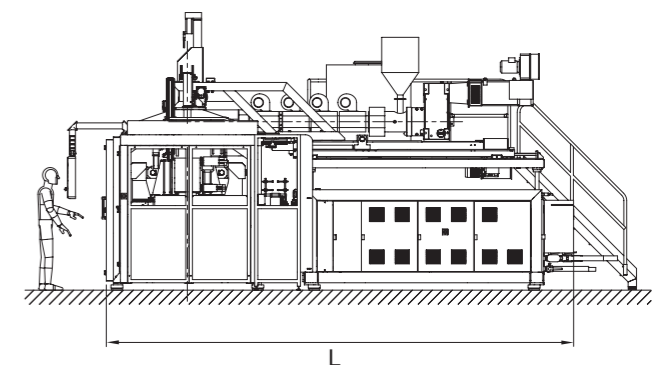
CLAMP UNIT

Clamp force	kN	100	120	140	160	200	230	270	300	400	270	350
Horizontal stroke	mm	400	450	525	650	710	750	810	810	1120	710	700
Carriage dry-cycle time**	s	2,4	2,5	2,9	3,2	3,4	3,5	3,6	3,6	4,2	3,6	3,6



MACHINE DIMENSIONS AND WEIGHT***

Width (W)	mm	2300	2300	3800	4200	4450	4850	4850	4850	6750	4.85	5350
Length (L)	mm	4900	4900	6200	6200	6400	6400	6400	6400	6400	6.4	8000
Height (H)	mm	3500 ÷ 4000	3500 ÷ 4000	3800 ÷ 4200	4000 ÷ 4500	4000 ÷ 4500	4000 ÷ 4500	4000 ÷ 4500	4000 ÷ 4500	4000 ÷ 4500	4.5	5500
Total weight (without molds)	kg	8.500	8.500	13.000	14.000	15.000	15.500	15.500	15.500	16.500	15.500	15.000



SMOOTH FEEDING BARREL

GROOVED FEEDING BARREL

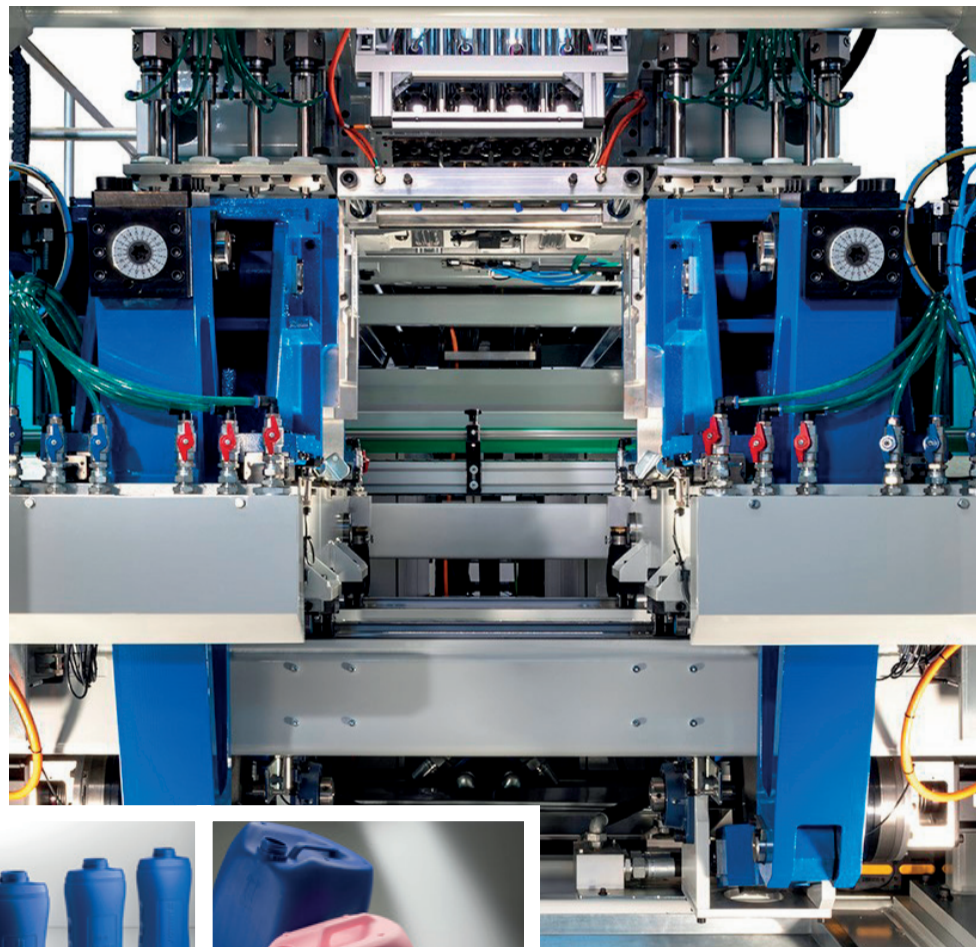
EXTRUDERS	ECE50	ECE60	ECE70	ECE80	M-ECE40	M-ECE50	M-ECE60	M-ECE70	M-ECE80	M-ECE90	M-ECE100	M-ECE120	M-ECE150
Screw diameter / L:D ratio	mm 50 / 24	60 / 24	70 / 24	80 / 24	40 / 24	50 / 24	60 / 24	70 / 24	80 / 24	90 / 24	100 / 24	120 / 24	150 / 24 / 28
Max output (HDPE with HLMFI >15)	kg/h 40	70	95	120	60	80	125	155	210	260	320	430	660 / 800
Standard output (HDPE with HLMFI >15)	kg/h 30	45	60	80	40	55	85	105	145	180	225	300	460 / 600
Standard output (VHMWPE with HLMFI = 2)	kg/h n.d.	n.d.	n.d.	n.d.	45	60	90	110	150	185	230	310	475 / 650
Output range (PVC)	kg/h 15 ÷ 40	20 ÷ 50	25 ÷ 65	30 ÷ 80	n.d.	n.d.	n.d.	n.d.	n.d.	n.d.	n.d.	n.d.	n.d.

* With mold exceeding up to 50 mm above top of platen. ** Sum of clamp and shuttle dry movements, apart from the process. *** Data may vary depending on machine configuration.

Data is subject to change without notice. Other configurations are available upon request.

UCS ALL-ELECTRIC SHUTTLE SERIES

CONTINUOUS EXTRUSION BLOW MOLDING MACHINES



Uniloy Italy

Via Alessandrini, 43
20013 Magenta (MI) - Italy
Phone: +39.02.9700071
Fax: +39.02.97280109
sales-eu@uniloy.com

Uniloy Global Headquarters

5550 Occidental Hwy, Suite B
Tecumseh, MI 49286, USA
Phone: +1.517.424.8756
Fax: +1.517.423.5671
sales-us@uniloy.com



UNILOY

EXPERIENCE THE UNILOY DIFFERENCE

US: 877-UNILOY1 | EU: +39.02.9700071 | uniloy.com